

Accreditation 2014 Self-Study/Evaluation
 Spring 2013 Survey Results as compared to Spring 2011 & Spring 2012

		2011		2012		2013	
1	Employment Position (please check only one):						
	Answer Options	Response Percent	Response Count	Response Percent	Response Count	Response Percent	Response Count
	Full-time Staff	40.0%	20	49.1%	26	52.4%	43
	Part-time Staff	14.0%	7	9.4%	5	4.9%	4
	Full-time Faculty	32.0%	16	18.9%	10	20.7%	17
	Part-time Faculty	12.0%	6	11.3%	6	15.9%	13
	Administration	2.0%	1	11.3%	6	6.1%	5
		<i>answered question</i>	50		53		82

Standard 1:

2	The institution has developed processes by which continuous dialog regarding student learning and institutional processes take place.						
	Answer Options	Response Percent	Response Count	Response Percent	Response Count	Response Percent	Response Count
	Strongly Agree	23.8%	10	20.4%	10	35.2%	25
	Agree	57.1%	24	65.3%	32	47.9%	34
	Disagree	4.8%	2	6.1%	3	5.6%	4
	Strongly Disagree	9.5%	4	0.0%	0	2.8%	2
	Do Not Know or Not Applicable To Me	4.8%	2	8.2%	4	8.5%	6
		<i>answered question</i>	42		49		71

3	I participate in dialog and processes aimed at improving institutional effectiveness (planning, program review and assessment of student learning).						
	Answer Options	Response Percent	Response Count	Response Percent	Response Count	Response Percent	Response Count
	Strongly Agree	24.4%	10	32.7%	16	26.4%	19
	Agree	51.2%	21	53.1%	26	45.8%	33
	Disagree	7.3%	3	8.2%	4	11.1%	8
	Strongly Disagree	7.3%	3	0.0%	0	1.4%	1
	Do Not Know or Not Applicable To Me	9.8%	4	6.1%	3	15.3%	11
		<i>answered question</i>	41		49		72

4	Clearly stated measurable strategic goals and objectives guide the college community in making decisions regarding planning and allocation of resources as well as curriculum and program development.						
	Answer Options	Response Percent	Response Count	Response Percent	Response Count	Response Percent	Response Count
	Strongly Agree	21.4%	9	16.3%	8	26.8%	19
	Agree	47.6%	20	71.4%	35	47.9%	34
	Disagree	19.0%	8	4.1%	2	7.0%	5
	Strongly Disagree	7.1%	3	0.0%	0	4.2%	3
	Do Not Know or Not Applicable To Me	4.8%	2	8.2%	4	14.1%	10
		<i>answered question</i>	42		49		71

Accreditation 2014 Self-Study/Evaluation
 Spring 2013 Survey Results as compared to Spring 2011 & Spring 2012

	2011		2012		2013	
5	I am familiar with the college mission statement.					
Answer Options	Response Percent	Response Count	Response Percent	Response Count	Response Percent	Response Count
Strongly Agree	35.7%	15	51.0%	25	34.7%	25
Agree	64.3%	27	44.9%	22	62.5%	45
Disagree	0.0%	0	4.1%	2	1.4%	1
Strongly Disagree	0.0%	0	0.0%	0	0.0%	0
Do Not Know or Not Applicable To Me	0.0%	0	0.0%	0	1.4%	1
	<i>answered question</i> 42		49		72	
6	The educational purposes identified in the mission statement are appropriate to Lassen Community College and its intended students.					
Answer Options	Response Percent	Response Count	Response Percent	Response Count	Response Percent	Response Count
Strongly Agree	36.6%	15	51.1%	24	37.5%	27
Agree	58.5%	24	44.7%	21	51.4%	37
Disagree	2.4%	1	2.1%	1	6.9%	5
Strongly Disagree	2.4%	1	0.0%	0	0.0%	0
Do Not Know or Not Applicable To Me	0.0%	0	2.1%	1	4.2%	3
	<i>answered question</i> 41		47		72	
7	The mission statement is applied during planning and decision-making.					
Answer Options	Response Percent	Response Count	Response Percent	Response Count	Response Percent	Response Count
Strongly Agree	23.8%	10	24.5%	12	21.1%	15
Agree	47.6%	20	51.0%	25	50.7%	36
Disagree	11.9%	5	6.1%	3	12.7%	9
Strongly Disagree	7.1%	3	0.0%	0	0.0%	0
Do Not Know or Not Applicable To Me	9.5%	4	18.4%	9	15.5%	11
	<i>answered question</i> 42		49		71	
8	The planning process being used works and produces appropriate institutional plans.					
Answer Options	Response Percent	Response Count	Response Percent	Response Count	Response Percent	Response Count
Strongly Agree	16.7%	7	16.7%	8	16.9%	12
Agree	45.2%	19	64.6%	31	49.3%	35
Disagree	19.0%	8	8.3%	4	12.7%	9
Strongly Disagree	7.1%	3	0.0%	0	4.2%	3
Do Not Know or Not Applicable To Me	11.9%	5	10.4%	5	16.9%	12
	<i>answered question</i> 42		48		71	

Accreditation 2014 Self-Study/Evaluation
 Spring 2013 Survey Results as compared to Spring 2011 & Spring 2012

	2011		2012		2013	
9	I received information about institutional planning through a variety of ways:(please check all that apply)					
Answer Options	Response Percent	Response Count	Response Percent	Response Count	Response Percent	Response Count
Committee Minutes	72.5%	29	65.3%	32	60.6%	43
E-mail	90.0%	36	91.8%	45	90.1%	64
My Constituent Group's Representative	37.5%	15	38.8%	19	40.8%	29
Open Forums	65.0%	26	42.9%	21	19.7%	14
Other	7.5%	3	8.2%	4	2.8%	2
If Other (please specify)		4		5		2
	<i>answered question</i> 40		49		71	
10	The Comprehensive Institutional Master Plan is the appropriate vehicle for institutional planning.					
Answer Options	Response Percent	Response Count	Response Percent	Response Count	Response Percent	Response Count
Strongly Agree	19.0%	8	25.0%	12	25.7%	18
Agree	69.0%	29	62.5%	30	57.1%	40
Disagree	0.0%	0	0.0%	0	1.4%	1
Strongly Disagree	4.8%	2	0.0%	0	0.0%	0
Do Not Know	7.1%	3	12.5%	6	15.7%	11
	<i>answered question</i> 42		48		70	
11	I am familiar with the handbook for institutional planning and budget development.					
Answer Options	Response Percent	Response Count	Response Percent	Response Count	Response Percent	Response Count
Strongly Agree	19.0%	8	12.2%	6	9.9%	7
Agree	35.7%	15	46.9%	23	42.3%	30
Disagree	23.8%	10	28.6%	14	25.4%	18
Strongly Disagree	2.4%	1	4.1%	2	2.8%	2
Do Not Know or Not Applicable To me	19.0%	8	8.2%	4	19.7%	14
	<i>answered question</i> 42		49		71	
12	I had an opportunity to participate in the budget development process.					
Answer Options	Response Percent	Response Count	Response Percent	Response Count	Response Percent	Response Count
Strongly Agree	19.0%	8	8.3%	4	11.4%	8
Agree	23.8%	10	35.4%	17	30.0%	21
Disagree	38.1%	16	27.1%	13	22.9%	16
Strongly Disagree	4.8%	2	6.3%	3	8.6%	6
Do Not Know or Not Applicable To Me	14.3%	6	22.9%	11	27.1%	19
	<i>answered question</i> 42		48		70	

Accreditation 2014 Self-Study/Evaluation
 Spring 2013 Survey Results as compared to Spring 2011 & Spring 2012

		2011		2012		2013	
13	The institutional planning process is tied to the budget development process.						
	Answer Options	Response Percent	Response Count	Response Percent	Response Count	Response Percent	Response Count
	Strongly Agree	16.7%	7	12.2%	6	15.5%	11
	Agree	45.2%	19	55.1%	27	40.8%	29
	Disagree	11.9%	5	6.1%	3	7.0%	5
	Strongly Disagree	7.1%	3	0.0%	0	2.8%	2
	Do Not Know or Not Applicable To Me	19.0%	8	26.5%	13	33.8%	24
		<i>answered question</i>	42		49		71

Standard 2:

14	My students are able to get the resources they need in the College library to complete course assignments and research projects.						
	Answer Options	Response Percent	Response Count	Response Percent	Response Count	Response Percent	Response Count
	Strongly Agree	4.9%	2	6.1%	3	14.3%	10
	Agree	43.9%	18	49.0%	24	28.6%	20
	Disagree	7.3%	3	10.2%	5	7.1%	5
	Strongly Disagree	0.0%	0	0.0%	0	1.4%	1
	Do Not Know or Not Applicable To Me	43.9%	18	34.7%	17	48.6%	34
		<i>answered question</i>	41		49		70

15	My students are able to access the Learning Center when they need to.						
	Answer Options	Response Percent	Response Count	Response Percent	Response Count	Response Percent	Response Count
	Strongly Agree	7.3%	3	22.4%	11	18.3%	13
	Agree	53.7%	22	46.9%	23	33.8%	24
	Disagree	7.3%	3	6.1%	3	11.3%	8
	Strongly Disagree	0.0%	0	0.0%	0	1.4%	1
	Do Not Know or Not Applicable To Me	31.7%	13	24.5%	12	35.2%	25
		<i>answered question</i>	41		49		71

16	Faculty are effectively involved in the selection of library materials.						
	Answer Options	Response Percent	Response Count	Response Percent	Response Count	Response Percent	Response Count
	Strongly Agree	4.9%	2	10.2%	5	14.5%	10
	Agree	14.6%	6	46.9%	23	31.9%	22
	Disagree	14.6%	6	6.1%	3	7.2%	5
	Strongly Disagree	2.4%	1	0.0%	0	2.9%	2
	Do Not Know or Not Applicable To Me	63.4%	26	36.7%	18	43.5%	30
		<i>answered question</i>	41		49		69

Accreditation 2014 Self-Study/Evaluation
 Spring 2013 Survey Results as compared to Spring 2011 & Spring 2012

		2011		2012		2013	
17	The quality of the library materials is adequate to meet my needs.						
	Answer Options	Response Percent	Response Count	Response Percent	Response Count	Response Percent	Response Count
	Strongly Agree	4.9%	2	8.2%	4	8.6%	6
	Agree	29.3%	12	44.9%	22	38.6%	27
	Disagree	9.8%	4	8.2%	4	5.7%	4
	Strongly Disagree	2.4%	1	2.0%	1	2.9%	2
	Do Not Know or Not Applicable To Me	53.7%	22	36.7%	18	44.3%	31
		<i>answered question</i> 41		49		70	

18	I refer students to:						
	Answer Options	Response Percent	Response Count	Response Percent	Response Count	Response Percent	Response Count
	Counseling	76.9%	30	87.8%	43	78.6%	55
	Transfer Center	51.3%	20	44.9%	22	48.6%	34
	Financial Aid	71.8%	28	77.6%	38	72.9%	51
	EOP&S (Extended Opportunity Programs & Services)/Care	53.8%	21	57.1%	28	52.9%	37
	DSPS	48.7%	19	42.9%	21	42.9%	30
	CalWorks	30.8%	12	32.7%	16	24.3%	17
	Learning Center	71.8%	28	79.6%	39	65.7%	46
	Library	48.7%	19	57.1%	28	60.0%	42
	None of the above	5.1%	2	4.1%	2	5.7%	4
		<i>answered question</i> 39		49		70	

Standard 3:

19	The institution provides adequate physical space for my needs (i.e. classroom, shop, office)						
	Answer Options	Response Percent	Response Count	Response Percent	Response Count	Response Percent	Response Count
	Strongly Agree	20.0%	8	27.1%	13	31.4%	22
	Agree	42.5%	17	47.9%	23	47.1%	33
	Disagree	17.5%	7	16.7%	8	5.7%	4
	Strongly Disagree	12.5%	5	8.3%	4	11.4%	8
	Do Not Know or Not Applicable To Me	7.5%	3	0.0%	0	4.3%	3
		<i>answered question</i> 40		48		70	

Accreditation 2014 Self-Study/Evaluation
 Spring 2013 Survey Results as compared to Spring 2011 & Spring 2012

	2011		2012		2013	
20	The institution provides adequate equipment, furniture, materials, etc. for my needs.					
Answer Options	Response Percent	Response Count	Response Percent	Response Count	Response Percent	Response Count
Strongly Agree	13.2%	5	22.9%	11	21.7%	15
Agree	34.2%	13	50.0%	24	46.4%	32
Disagree	28.9%	11	16.7%	8	18.8%	13
Strongly Disagree	18.4%	7	8.3%	4	11.6%	8
Do Not Know or Not Applicable To Me	5.3%	2	2.1%	1	1.4%	1
	answered question	38		48		69
21	The campus is a safe environment.					
Answer Options	Response Percent	Response Count	Response Percent	Response Count	Response Percent	Response Count
Strongly Agree	20.0%	8	29.2%	14	28.6%	20
Agree	47.5%	19	54.2%	26	54.3%	38
Disagree	15.0%	6	10.4%	5	11.4%	8
Strongly Disagree	12.5%	5	4.2%	2	1.4%	1
Do Not Know or Not Applicable To Me	5.0%	2	2.1%	1	4.3%	3
	answered question	40		48		70
22	The campus is easily accessible (facilities are available when needed).					
Answer Options	Response Percent	Response Count	Response Percent	Response Count	Response Percent	Response Count
Strongly Agree	15.4%	6	22.9%	11	27.1%	19
Agree	48.7%	19	66.7%	32	55.7%	39
Disagree	20.5%	8	4.2%	2	8.6%	6
Strongly Disagree	2.6%	1	4.2%	2	1.4%	1
Do Not Know or Not Applicable To Me	12.8%	5	2.1%	1	7.1%	5
	answered question	39		48		70
23	The Institution assesses the need for information technology training for students, faculty and staff.					
Answer Options	Response Percent	Response Count	Response Percent	Response Count	Response Percent	Response Count
Strongly Agree	7.5%	3	12.5%	6	27.1%	19
Agree	32.5%	13	68.8%	33	54.3%	38
Disagree	35.0%	14	12.5%	6	11.4%	8
Strongly Disagree	10.0%	4	2.1%	1	0.0%	0
Do Not Know or Not Applicable To Me	15.0%	6	4.2%	2	7.1%	5
	answered question	40		48		70

Accreditation 2014 Self-Study/Evaluation
 Spring 2013 Survey Results as compared to Spring 2011 & Spring 2012

		2011		2012		2013	
24	The Institution ensures that technology decisions are developed from institutional needs and plans for improvement.						
Answer Options	Response Percent	Response Count	Response Percent	Response Count	Response Percent	Response Count	
Strongly Agree	22.5%	9	16.7%	8	20.3%	14	
Agree	32.5%	13	56.3%	27	49.3%	34	
Disagree	25.0%	10	10.4%	5	13.0%	9	
Strongly Disagree	5.0%	2	0.0%	0	0.0%	0	
Do Not Know or Not Applicable To Me	15.0%	6	16.7%	8	17.4%	12	
<i>answered question</i>		40		48		69	

25	The Institution determines that technology needs in program and services areas are met effectively.						
Answer Options	Response Percent	Response Count	Response Percent	Response Count	Response Percent	Response Count	
Strongly Agree	12.5%	5	6.3%	3	15.7%	11	
Agree	20.0%	8	60.4%	29	45.7%	32	
Disagree	40.0%	16	18.8%	9	24.3%	17	
Strongly Disagree	2.5%	1	2.1%	1	2.9%	2	
Do Not Know or Not Applicable To Me	25.0%	10	12.5%	6	11.4%	8	
<i>answered question</i>		40		48		70	

26	Financial information (such as budget information, quarterly reports, etc.) is provided throughout the institution.						
Answer Options	Response Percent	Response Count	Response Percent	Response Count	Response Percent	Response Count	
Strongly Agree	17.5%	7	14.6%	7	17.1%	12	
Agree	42.5%	17	43.8%	21	35.7%	25	
Disagree	22.5%	9	22.9%	11	27.1%	19	
Strongly Disagree	15.0%	6	6.3%	3	5.7%	4	
Do Not Know or Not Applicable To Me	2.5%	1	12.5%	6	14.3%	10	
<i>answered question</i>		40		48		70	

27	All constituencies have appropriate opportunities to participate in the budget development process.						
Answer Options	Response Percent	Response Count	Response Percent	Response Count	Response Percent	Response Count	
Strongly Agree	17.5%	7	6.7%	3	12.9%	9	
Agree	35.0%	14	55.6%	25	32.9%	23	
Disagree	22.5%	9	17.8%	8	22.9%	16	
Strongly Disagree	10.0%	4	4.4%	2	8.6%	6	
Do Not Know or Not Applicable To Me	15.0%	6	15.6%	7	22.9%	16	
<i>answered question</i>		40		45		70	

Accreditation 2014 Self-Study/Evaluation
 Spring 2013 Survey Results as compared to Spring 2011 & Spring 2012

	2011		2012		2013	
28	Job descriptions accurately reflect position duties, responsibilities, and authority.					
Answer Options	Response Percent	Response Count	Response Percent	Response Count	Response Percent	Response Count
Strongly Agree	5.1%	2	6.3%	3	10.3%	7
Agree	38.5%	15	47.9%	23	48.5%	33
Disagree	28.2%	11	33.3%	16	20.6%	14
Strongly Disagree	20.5%	8	8.3%	4	17.6%	12
Do Not Know or Not Applicable To Me	7.7%	3	4.2%	2	2.9%	2
	answered question	39		48		68
29	The institution upholds written codes of professional ethics.					
Answer Options	Response Percent	Response Count	Response Percent	Response Count	Response Percent	Response Count
Strongly Agree	5.0%	2	10.4%	5	16.2%	11
Agree	52.5%	21	64.6%	31	51.5%	35
Disagree	30.0%	12	12.5%	6	16.2%	11
Strongly Disagree	5.0%	2	0.0%	0	4.4%	3
Do Not Know	7.5%	3	12.5%	6	11.8%	8
	answered question	40		48		68
30	The institution has a sufficient number of faculty, staff, and administrators.					
Answer Options	Response Percent	Response Count	Response Percent	Response Count	Response Percent	Response Count
Strongly Agree	2.5%	1	0.0%	0	5.8%	4
Agree	20.0%	8	37.5%	18	37.7%	26
Disagree	47.5%	19	43.8%	21	34.8%	24
Strongly Disagree	12.5%	5	12.5%	6	8.7%	6
Do Not Know	17.5%	7	6.3%	3	13.0%	9
	answered question	40		48		69
31	Personnel policies are available for review and equitably and consistently administered.					
Answer Options	Response Percent	Response Count	Response Percent	Response Count	Response Percent	Response Count
Strongly Agree	2.6%	1	6.3%	3	8.7%	6
Agree	41.0%	16	54.2%	26	40.6%	28
Disagree	28.2%	11	18.8%	9	17.4%	12
Strongly Disagree	5.1%	2	4.2%	2	5.8%	4
Do Not Know	23.1%	9	16.7%	8	27.5%	19
	answered question	39		48		69

Accreditation 2014 Self-Study/Evaluation
 Spring 2013 Survey Results as compared to Spring 2011 & Spring 2012

	2011		2012		2013	
32	The institution advocates integrity in the treatment of administration, faculty, staff and students.					
Answer Options	Response Percent	Response Count	Response Percent	Response Count	Response Percent	Response Count
Strongly Agree	12.5%	5	23.4%	11	20.3%	14
Agree	47.5%	19	55.3%	26	50.7%	35
Disagree	12.5%	5	8.5%	4	15.9%	11
Strongly Disagree	17.5%	7	4.3%	2	5.8%	4
Do Not Know	10.0%	4	8.5%	4	7.2%	5
	answered question 40		47		69	

33	The institution provides all personnel with appropriate opportunities for continued professional development.					
Answer Options	Response Percent	Response Count	Response Percent	Response Count	Response Percent	Response Count
Strongly Agree	0.0%	0	0.0%	0	18.8%	13
Agree	33.3%	13	45.8%	22	42.0%	29
Disagree	35.9%	14	35.4%	17	23.2%	16
Strongly Disagree	25.6%	10	8.3%	4	7.2%	5
Do Not Know	5.1%	2	10.4%	5	8.7%	6
	answered question 39		48		69	

Standard 4:

34	I am familiar with the Shared Governance and Collegial Consultation Process Handbook.					
Answer Options	Response Percent	Response Count	Response Percent	Response Count	Response Percent	Response Count
Strongly Agree	25.0%	10	22.2%	10	16.2%	11
Agree	47.5%	19	46.7%	21	50.0%	34
Disagree	17.5%	7	17.8%	8	16.2%	11
Strongly Disagree	0.0%	0	0.0%	0	0.0%	0
Do Not Know or Not Applicable To Me	10.0%	4	13.3%	6	17.6%	12
	answered question 40		45		68	

35	I understand the role of the Consultation Council in Shared Governance.					
Answer Options	Response Percent	Response Count	Response Percent	Response Count	Response Percent	Response Count
Strongly Agree	27.5%	11	22.7%	10	17.6%	12
Agree	50.0%	20	45.5%	20	51.5%	35
Disagree	12.5%	5	20.5%	9	11.8%	8
Strongly Disagree	0.0%	0	0.0%	0	0.0%	0
Do Not Know or Not Applicable To Me	10.0%	4	11.4%	5	19.1%	13
	answered question 40		44		68	

Accreditation 2014 Self-Study/Evaluation
 Spring 2013 Survey Results as compared to Spring 2011 & Spring 2012

	2011		2012		2013	
36	I understand the role of my constituent group in shared governance.					
Answer Options	Response Percent	Response Count	Response Percent	Response Count	Response Percent	Response Count
Strongly Agree	25.0%	10	20.0%	9	23.9%	16
Agree	50.0%	20	46.7%	21	43.3%	29
Disagree	10.0%	4	24.4%	11	11.9%	8
Strongly Disagree	2.5%	1	0.0%	0	0.0%	0
Do Not Know or Not Applicable To Me	12.5%	5	8.9%	4	20.9%	14
	<i>answered question</i> 40		45		67	
37	I have a voice in the decision-making process through shared governance.					
Answer Options	Response Percent	Response Count	Response Percent	Response Count	Response Percent	Response Count
Strongly Agree	23.1%	9	18.2%	8	16.4%	11
Agree	30.8%	12	47.7%	21	40.3%	27
Disagree	25.6%	10	15.9%	7	20.9%	14
Strongly Disagree	10.3%	4	0.0%	0	1.5%	1
Do Not Know or Not Applicable To Me	10.3%	4	18.2%	8	20.9%	14
	<i>answered question</i> 39		44		67	
38	The faculty, administration, and staff work together to improve the institution in a professional manner.					
Answer Options	Response Percent	Response Count	Response Percent	Response Count	Response Percent	Response Count
Strongly Agree	17.9%	7	15.6%	7	13.4%	9
Agree	43.6%	17	57.8%	26	58.2%	39
Disagree	28.2%	11	20.0%	9	16.4%	11
Strongly Disagree	7.7%	3	2.2%	1	6.0%	4
Do Not Know or Not Applicable To Me	2.6%	1	4.4%	2	6.0%	4
	<i>answered question</i> 39		45		67	
39	Policies and procedures are clearly defined and followed.					
Answer Options	Response Percent	Response Count	Response Percent	Response Count	Response Percent	Response Count
Strongly Agree	10.0%	4	9.1%	4	14.7%	10
Agree	32.5%	13	61.4%	27	39.7%	27
Disagree	37.5%	15	27.3%	12	25.0%	17
Strongly Disagree	12.5%	5	0.0%	0	5.9%	4
Do Not Know or Not Applicable To Me	7.5%	3	2.3%	1	14.7%	10
	<i>answered question</i> 40		44		68	

Accreditation 2014 Self-Study/Evaluation
 Spring 2013 Survey Results as compared to Spring 2011 & Spring 2012

	2011		2012		2013	
40	Communication is open, honest, and encouraged at all levels.					
Answer Options	Response Percent	Response Count	Response Percent	Response Count	Response Percent	Response Count
Strongly Agree	7.5%	3	13.3%	6	13.4%	9
Agree	37.5%	15	55.6%	25	40.3%	27
Disagree	30.0%	12	26.7%	12	25.4%	17
Strongly Disagree	17.5%	7	2.2%	1	7.5%	5
Do Not Know or Not Applicable To Me	7.5%	3	2.2%	1	13.4%	9
	<i>answered question</i> 40		45		67	
41	The college values effective leadership throughout the institution.					
Answer Options	Response Percent	Response Count	Response Percent	Response Count	Response Percent	Response Count
Strongly Agree	12.8%	5	17.8%	8	14.9%	10
Agree	33.3%	13	66.7%	30	61.2%	41
Disagree	33.3%	13	11.1%	5	9.0%	6
Strongly Disagree	10.3%	4	2.2%	1	6.0%	4
Do Not Know or Not Applicable To Me	10.3%	4	2.2%	1	9.0%	6
	<i>answered question</i> 39		45		67	
42	The college communicates results of the evaluation of the shared governance structure and processes to faculty and staff.					
Answer Options	Response Percent	Response Count	Response Percent	Response Count	Response Percent	Response Count
Strongly Agree	12.5%	5	11.1%	5	14.7%	10
Agree	47.5%	19	53.3%	24	55.9%	38
Disagree	17.5%	7	13.3%	6	10.3%	7
Strongly Disagree	5.0%	2	0.0%	0	2.9%	2
Do Not Know or Not Applicable To Me	17.5%	7	22.2%	10	16.2%	11
	<i>answered question</i> 40		45		68	
43	The President facilitates the setting of values, goals, and priorities to improve the college's educational programs.					
Answer Options	Response Percent	Response Count	Response Percent	Response Count	Response Percent	Response Count
Strongly Agree	12.5%	5	7.3%	3	16.2%	11
Agree	57.5%	23	48.8%	20	45.6%	31
Disagree	22.5%	9	19.5%	8	14.7%	10
Strongly Disagree	0.0%	0	0.0%	0	5.9%	4
Do Not Know or Not Applicable To Me	7.5%	3	24.4%	10	17.6%	12
	<i>answered question</i> 40		41		68	

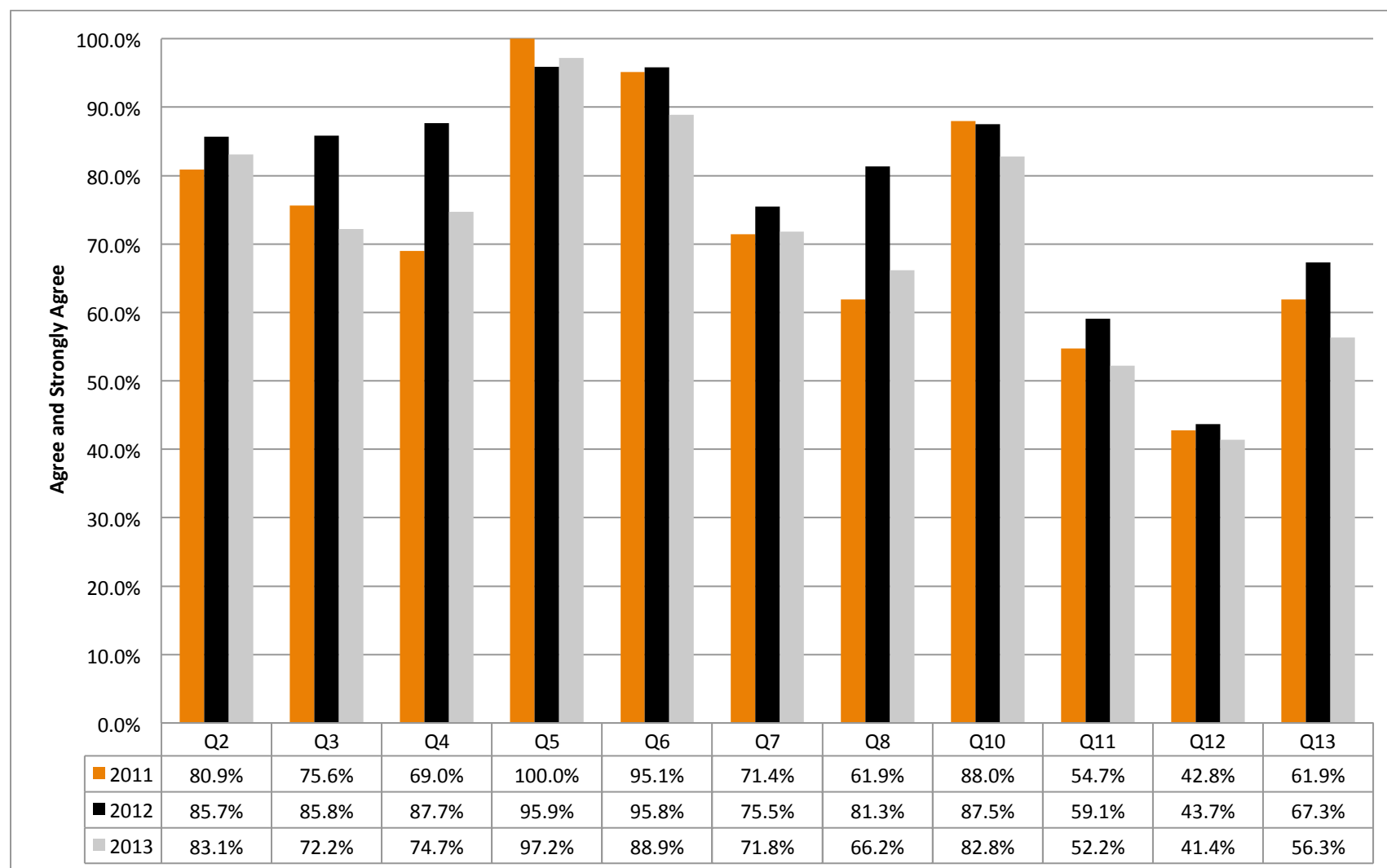
Accreditation 2014 Self-Study/Evaluation
 Spring 2013 Survey Results as compared to Spring 2011 & Spring 2012

	2011		2012		2013	
44	The President communicates effectively to the community, administration, staff, and students.					
Answer Options	Response Percent	Response Count	Response Percent	Response Count	Response Percent	Response Count
Strongly Agree	5.4%	2	4.8%	2	26.5%	18
Agree	51.4%	19	45.2%	19	52.9%	36
Disagree	27.0%	10	31.0%	13	10.3%	7
Strongly Disagree	5.4%	2	0.0%	0	4.4%	3
Do Not Know or Not Applicable To Me	10.8%	4	19.0%	8	5.9%	4
	answered question	37		42		68
45	The President plans, evaluates and supervises the administrative structure of the college to reflect the purpose, size and complexity of the institution.					
Answer Options	Response Percent	Response Count	Response Percent	Response Count	Response Percent	Response Count
Strongly Agree	7.7%	3	4.4%	2	10.3%	7
Agree	43.6%	17	44.4%	20	44.1%	30
Disagree	20.5%	8	22.2%	10	13.2%	9
Strongly Disagree	10.3%	4	2.2%	1	8.8%	6
Do Not Know or Not Applicable To Me	17.9%	7	26.7%	12	23.5%	16
	answered question	39		45		68
46	The Governing Board effectively represents the public interest.					
Answer Options	Response Percent	Response Count	Response Percent	Response Count	Response Percent	Response Count
Strongly Agree	10.0%	4	6.8%	3	4.4%	3
Agree	37.5%	15	47.7%	21	42.6%	29
Disagree	22.5%	9	15.9%	7	17.6%	12
Strongly Disagree	7.5%	3	6.8%	3	11.8%	8
Do Not Know or Not Applicable To Me	22.5%	9	22.7%	10	23.5%	16
	answered question	40		44		68
47	The Governing Board adheres to its written code of ethics.					
Answer Options	Response Percent	Response Count	Response Percent	Response Count	Response Percent	Response Count
Strongly Agree	5.1%	2	7.0%	3	10.4%	7
Agree	41.0%	16	46.5%	20	41.8%	28
Disagree	10.3%	4	14.0%	6	9.0%	6
Strongly Disagree	2.6%	1	4.7%	2	9.0%	6
Do Not Know or Not Applicable To Me	41.0%	16	27.9%	12	29.9%	20
	answered question	39		39		67

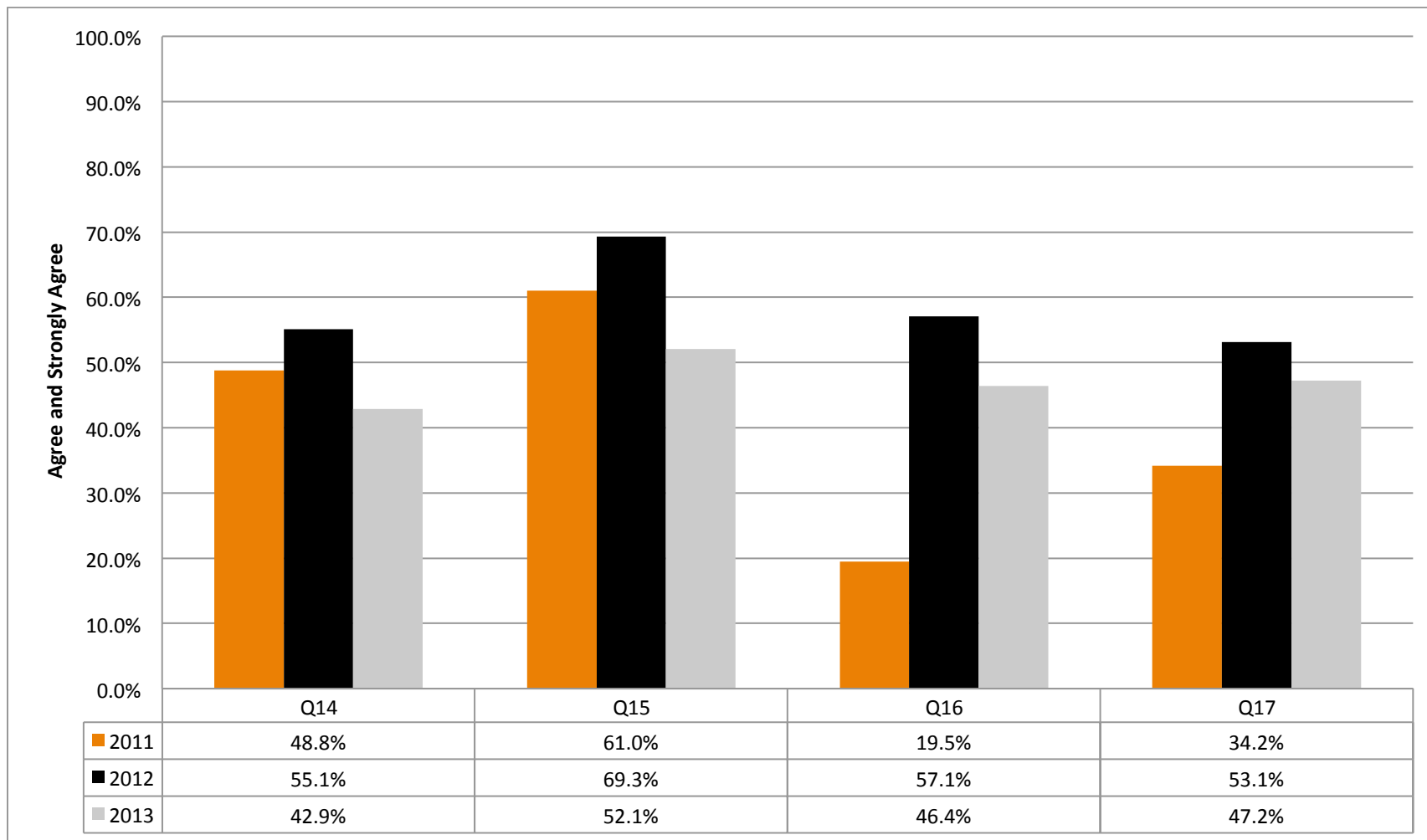
Accreditation 2014 Self-Study/Evaluation
 Spring 2013 Survey Results as compared to Spring 2011 & Spring 2012

	2011		2012		2013	
48	The Governing Board remains focused on policy matters and not direct intervention (micro-management).					
Answer Options	Response Percent	Response Count	Response Percent	Response Count	Response Percent	Response Count
Strongly Agree	7.5%	3	9.1%	4	7.7%	5
Agree	42.5%	17	45.5%	20	44.6%	29
Disagree	22.5%	9	18.2%	8	10.8%	7
Strongly Disagree	5.0%	2	4.5%	2	9.2%	6
Do Not Know or Not Applicable To Me	22.5%	9	22.7%	10	27.7%	18
	<i>answered question</i>	40		44		65
49	The Governing Board's actions reflect accreditation standards and expectations for institutional improvement.					
Answer Options	Response Percent	Response Count	Response Percent	Response Count	Response Percent	Response Count
Strongly Agree	7.5%	3	7.0%	3	8.8%	6
Agree	55.0%	22	46.5%	20	50.0%	34
Disagree	7.5%	3	9.3%	4	7.4%	5
Strongly Disagree	2.5%	1	4.7%	2	8.8%	6
Do Not Know or Not Applicable To Me	27.5%	11	32.6%	14	25.0%	17
	<i>answered question</i>	40		43		68

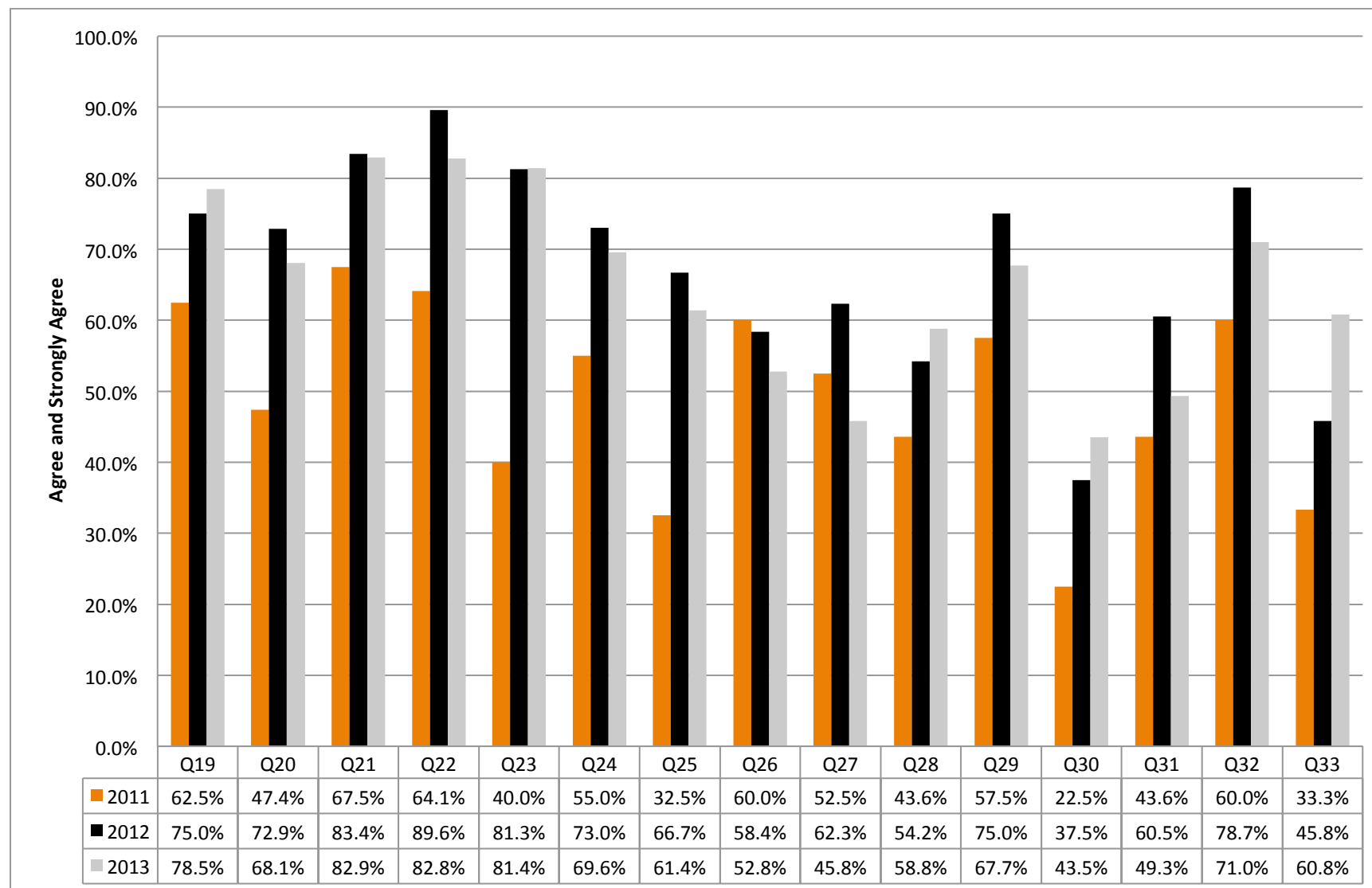
Standard 1: Institutional Mission and Effectiveness



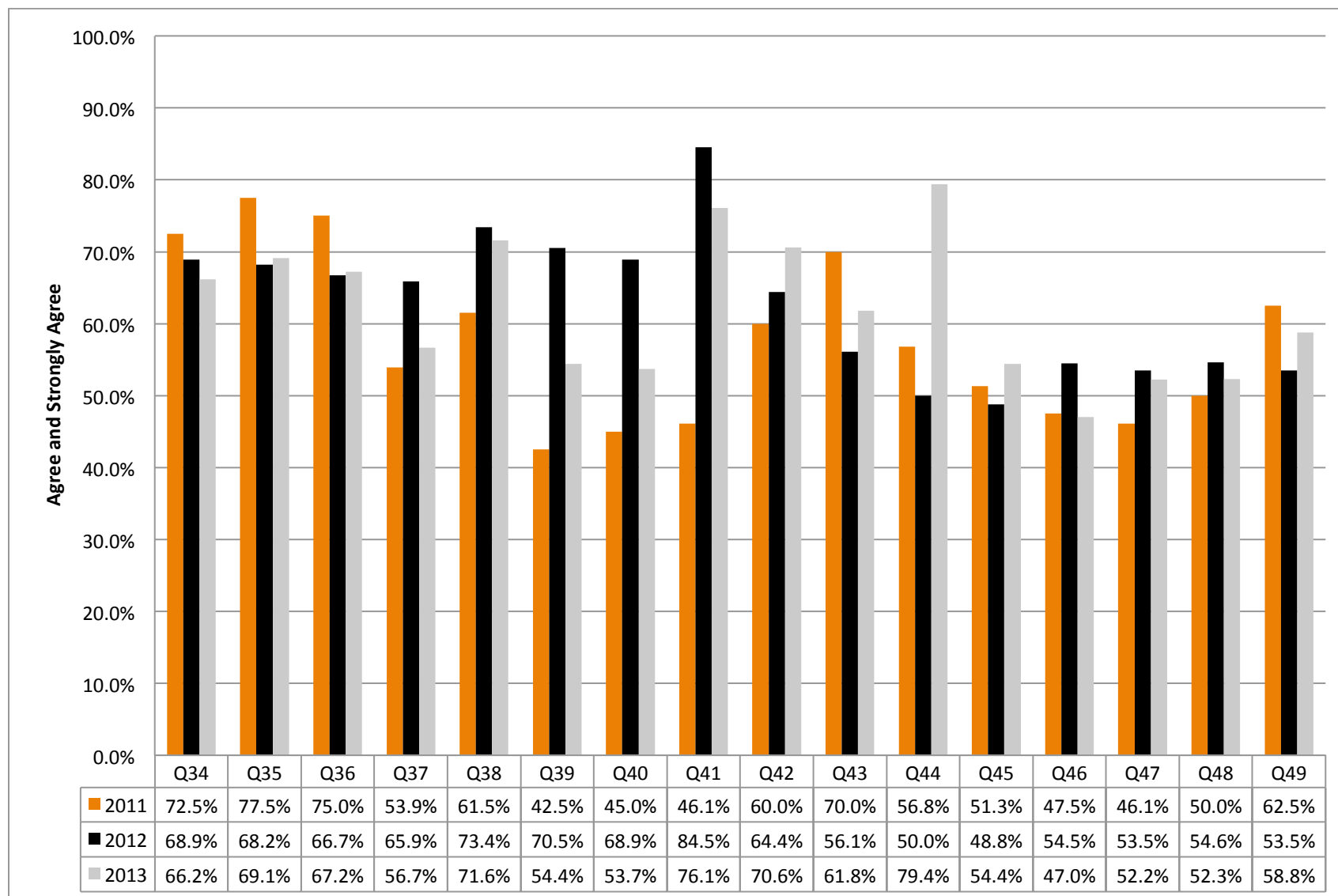
Standard 2: Student Learning Programs and Services



Standard 3: Resources



Standard 4: Leadership and Governance



Spring 2012 Comments:

Open-ended comments: Campus personnel submitted a total of 19 comments when asked (unaided) concerning ways to improve the following:

Communication	4
Planning Process	10
Comprehensive Institutional Master Plan	5
Total	19

With regard to communication, respondents suggest informal collegial discussions (n=1) and being directed to accomplish plans (n=1). Two comments were not applicable to the question.

Suggestions for improving the Planning Process included logistics (n=5, e.g. regularly scheduled meetings, more timely release of the staffing plan, video recording the meetings for later viewing and alternate methods for communicating decisions beyond meeting minutes), more grass roots participation in plan formulation (n=2), and stay focused on smaller range of goals (n=1). Two comments were not applicable to the question.

Suggestions for improving the Comprehensive Institutional Master Plan included broader opportunities for staff and faculty input (n=3), more transparency in decision-making (n=1) and one comment were not applicable to the question.

Spring 2013 Comments:

Open-ended comments: Campus personnel submitted a total of 15 comments when asked (unaided) concerning ways to improve the following:

Communication	6
Planning Process	9
Total	15

With regard to communication, respondents suggested more communication (n=2), more open communication between committees (n=1), constituent groups need to provide better feedback (n=1), updated information during convocations or division chair meetings (n=1), and provide venue (open forum) whereby staff has the opportunity to hold discussions, express concerns and ask questions regarding anything that is college related or affects the college (n=1).

Suggestions for improving the Planning Process included rotation of the members on committees (n=2), over the last 5 years the focus has been on process and procedures, Now we need to improve results and effectiveness (n=1), need continuity in administration (n=1), training for new administrators in the process (n=1), include adjunct faculty in the planning process (n=2) and practice accountability (n=2). Eight comments were not applicable to the question.

An additional thirteen comments were not specifically applicable to the questions in the self-evaluation survey.